

SE-2800



8 or 12 Input HD/SD AV Switcher

The Datavideo SE-2800 is a cost-effective, broadcast-quality switcher. Featuring 8 or 12 digital and analogue inputs, it is designed for live events and TV programmes that need to blend a variety of video and audio sources. Thanks to its small form factor, the SE-2800 is ideal for use in a portable rack unit or in outside broadcast vehicles.

Producing superb 4:2:2 10 bit broadcast quality pictures with versatile input/output configurations, the SE-2800 also has powerful, easy-to-use effects, such as dual picture-in-picture (PIP), downstream keyer (DSK) and logo insertion.



FEATURES

- Supports 8 or 12 HD or SD Inputs in a variety of configurations:
 - HD Mode
 - 1) 8 / 12 HD-SDI
 - 2) 6 / 9 HD-SDI + 2 / 3 HDMI
 - SD Mode
 - 1) 8 / 12 SD-SDI
 - 2) 4 / 6 SD-SDI + 4 / 6 composite video (CVBS)
 - 3) 4 / 6 SDI + 2 / 3 HDMI + 2 / 3 CVBS
- 3 SDI Outputs assignable to Program (PGM), Preview (PVW), AUX or PGM clean - Built-in SD down-scaler on CH-3 SDI output
- 2 HDMI outputs for multiview monitoring
- Audio I/O
 - Input: 4 analogue balanced XLR
 - Output: 2 analogue balanced XLR. Supports embedded audio SDI output from 4-CH XLR Audio input
- Two DSK, supports Key and Fill
- Cut, Mix and Wipe with borders
- Clock on screen
- Countdown counter on multiscreen
- Two PIP displays with user-defined borders
- Tally, GPI interface & RJ45 for firmware upgrade
- DC 12V operation voltage, available for mobile use

FRONT VIEW CONTROL PANEL

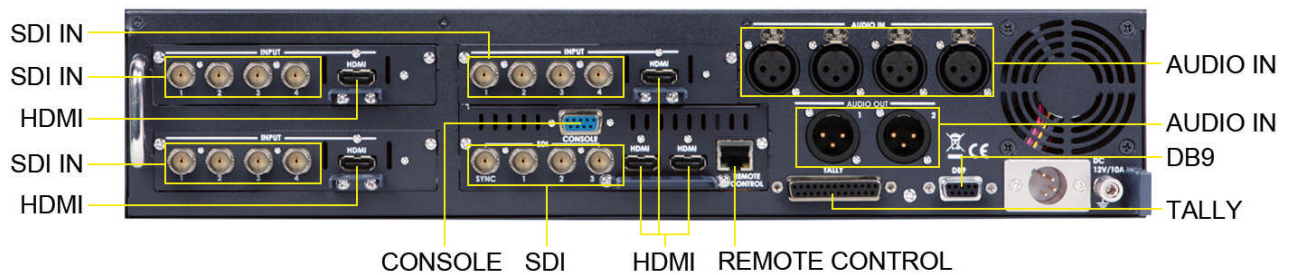


Datavideo Regional Distributor for Malaysia

Graphics Vision
(M) Sdn. Bhd. (175178-V)

117, Jalan Aminuddin Baki, Taman Tun Dr Ismail, 60000 Kuala Lumpur.
Tel: 603-7727 1868 Fax: 603-7729 1868 email: gvision@pc.jaring.my
websites: www.graphics-vision.com www.datavideo.info

REAR VIEW OF THE PROCESSING UNIT

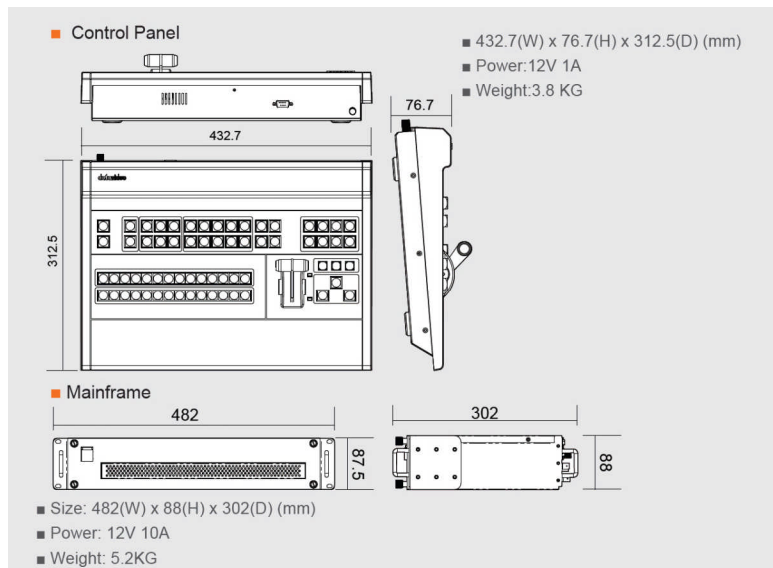


FRONT VIEW OF THE PROCESSING UNIT



SPECIFICATIONS

- Video format**
 SD (480/59.94i, 576/50i)
 HD (1080/59.94i, 1080/50i)
- Video Processing**
 Y:Cb:Cr, 4:2:2 10 bit
 SMPTE 259M-C (270 Mbps, 525/625 component video)
 SMPTE 292M (1.485, 1.485/1.001 Gbps)
- Genlock Mode**
 Blackburst or tri sync input
- Remote Control**
 RS-232
- Operating Temperature**
 0°C~50°C

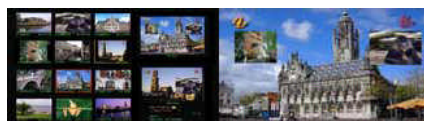


MULTISCREEN PREVIEW VIA 2 HDMI

Multiscreen monitoring is available on two HDMI monitors (not supplied). They can be used to monitor video and audio in a number of different configurations. For each set up, embedded audio level indication is available on all inputs and the Program windows



On screen 1: 9 live input
 On screen 2: 3 live inputs + Preview & Program windows



On screen 1: 12 live input + Preview & Program windows
 On screen 2: Program windows



On screen 1: 8 live input + Preview & Program windows
 On screen 2: Program windows

Datavideo Regional Distributor for Malaysia

Graphics Vision
 (M) Sdn. Bhd. (175178-V)

117, Jalan Aminuddin Baki, Taman Tun Dr Ismail, 60000 Kuala Lumpur.
 Tel: 603-7727 1868 Fax: 603-7729 1868 email: gvision@pc.jaring.my
 websites: www.graphics-vision.com www.datavideo.info