

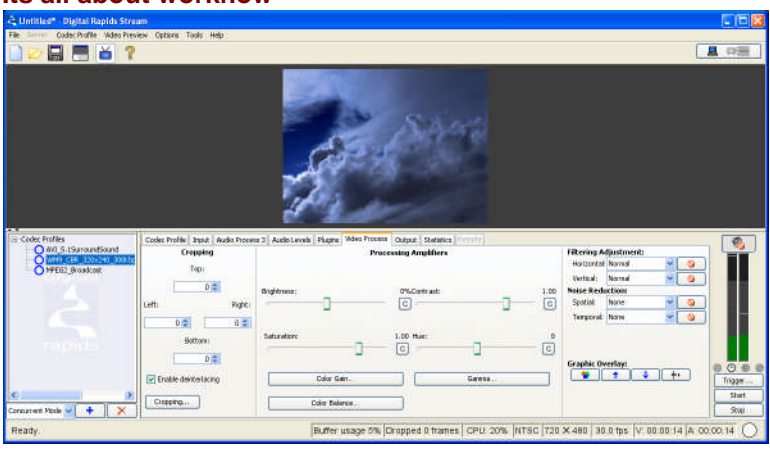
DRC-Stream500

Video Capture, Encoding and Streaming Cards

Real World Broadband with no penalties

Designed for professional applications but priced competitively with software only products, the DRCStream 500 is ideal for corporate messaging, live web streaming and archiving, security, distance education and many other applications. If you have video and you want to get it onto the internet or onto your local network, you won't find another solution which competes with the DRC-Stream 500.

Its all about workflow

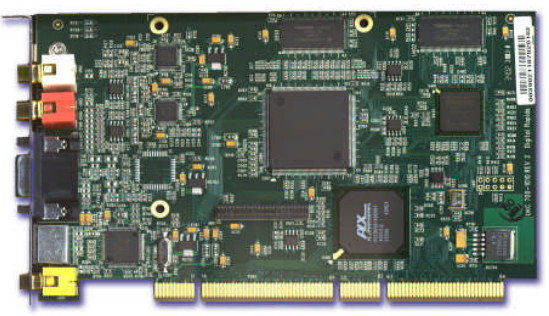


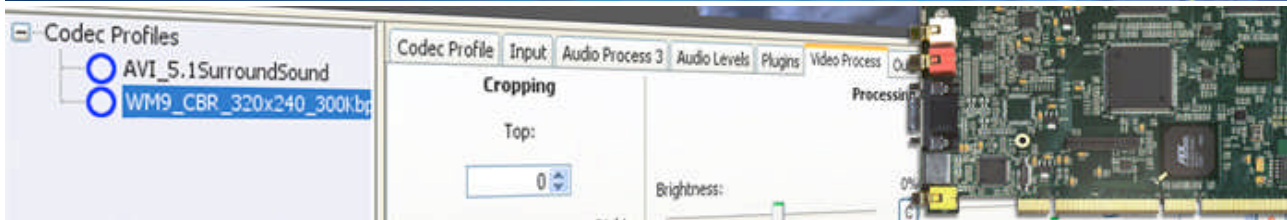
The DRC-Stream 500 ships with its own native streaming software application known simply as Stream. Stream is very easy to use, perfect for the novice, and yet powerfully programmable for the expert user. To create high quality video streams the Stream process is effortless. You simply configure your system for the video and audio inputs you will be using and select the formats you wish to encode to (Windows WM9, Real Helix, Quicktime, or optional MPEG). Every time you want to use the system you simply load your project and hit the start button. Stream will automatically manage all of the codec parameters and output filenames for you, giving you the peace of mind to concentrate

on other tasks. To check your encoded files, simply select the integrated play button and the file you encoded will playback for you in the appropriate media player. If you want to closely manage the encoding process, you can interactively tweak video parameters using the integrated proc amp controls, set cropping, change aspect ratios, set audio levels, and pre-program your metadata easily and save all of those settings into a standard XML formatted project file. This process can be set to be fully automatic or fully interactive, it is completely up to you.

It is all about quality

Video in, high quality streams out. It is that easy. DRC-Stream 500 will allow you to consistently create high quality streaming video in real-time, every time without the complexity involved in software based systems. DRC-Stream 500 utilizes the same high quality Media Processing Engine (MPE) found in our high end cards and enterprise class server solutions. The MPE is a combination of video and audio pre-processing filters that run in hardware, in real-time, eliminating the guess-work from creating high quality streaming video. The MPE features Motion Adaptive de-interlacing which will allow you to stream progressive scan video at any size without having to worry about artifacts caused by interlace video. Because your video will be converted to progressive scan, you will not be limited to low resolution video streams. You will be able to stream higher quality, higher resolution streams without using more bandwidth. The noise reduction features of the MPE will automatically reduce or even remove the noise in your video caused by low light conditions, analog tapes or transmission, film grain, and many other types of noise. With less noise in your video your video will compress more efficiently and use less bandwidth and storage. The MPE also features advanced audio capabilities with 20 bit audio processing, 7-band Parametric EQ, and Dynamic Range Compression and Expansion. This will ensure your message gets through loud and clear





Specifications

Stream LE Software Features (included with all boards):

Easy to use interface with programmable environment for single-click encoding

Supports an extensive range of standard and optional codec formats including Windows Media, VC-1, Real Helix, Quicktime, MPEG-1, MPEG-2, MPEG-4, AVI, DivX, Flash, AVC (H.264), MP3, and AC3

Simultaneous output to a mixture of codecs, resolutions and bitrates

Encode from live input or transcode from existing media files

Live monitoring of video and audio with interactive control of hardware pre-processing capabilities

Programmable event triggers (GPI, duration, custom keys)

StreamPro™ Software Upgrade Features Include:

RS422 deck control, batch encoding and batch transcoding, watch folder support, direct DVD publishing, software video processing plug-ins and more

Form Factor

Half Length, Full Height PCI 64 bit /66Mhz (32 bit/33Mhz compatible)

Video and Audio Inputs

Supports NTSC and PAL video standards

1 - Composite Video (RCA)

1 - S-Video (Mini Din)

2 - Unbalanced Audio (L+R) on RCA

4 - Balanced Stereo Audio inputs on XLR

Hardware Audio Processing

48kHz, 24-bit audio processing (16-bit capture)

7-band parametric EQ per channel

Dynamic range compression/expansion

Hardware sample rate conversion

Volumn control; Bass and Treble control

Hardware Video Processing

Motion adaptive de-interlacing

Noise reduction (3D and 2D)

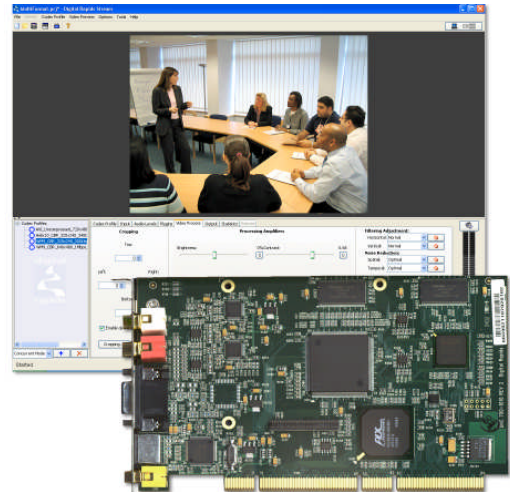
Aspect ratio conversion

Cropping and Scaling

Proc amp control

Gamma correction

Graphics overlay with scaling and positioning



Supported Video Capture & Encoding Formats

Windows Media 7,8,9

SMPTE VC-1

Real, Real Helix 9,10

Quicktime (MOV and MPEG4)

AVI (VFW/DirectShow)

Multichannel audio

Optional:

MPEG1 and MPEG2 (192kbps to 80Mbps, 4:2:0 or 4:2:2)

MPEG2 live streaming

Digital Rapids AVC Encoder™ (AVC H.264, MPEG-4, AAC, High-Efficiency AAC)

On2 VP6 (Adobe Flash 8)

Sorenson ACE

(MPEG4, AVC H.264, MOV, Flash 7, MP3, DivX)

AC3 audio (stereo or surround options)